

**DISTRICT**

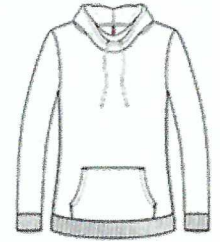
\$26.00

**District® Women's Lightweight Fleece Hoodie. DM493**

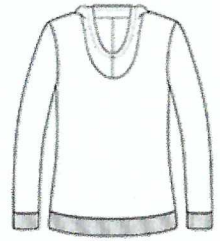


Soft and lightweight, this hoodie works year-round.

- 6.5-ounce, 55/45 combed ring spun cotton/poly fleece
- Cow l neck converts to hood
- Dyed-to-match draw cords
- Coverstitch details
- Back neck tape
- Slightly longer length
- 2x2 rib knit cuffs and hem



front



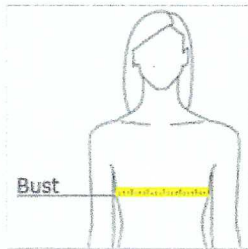
back

Please note: This product is transitioning from woven labels to tear-away labels. Your order may contain a combination of both labels.

**CARE INSTRUCTIONS**

Machine wash cold. With like colors. Non-chlorine bleach if needed. Tumble dry low. Do not use fabric softener. Do not dry clean. Cool iron if needed.

**HOW TO MEASURE**



**BUST**

Measure under the arm and around the fullest part of the bust with arms down, keeping tape horizontal.

**SIZE CHART**

	XS	S	M	L	XL	XXL	3XL	4XL
Size	2	4/6	8/10	12/14	16/18	20/22	24/26	28/30
Bust	32-34	35-36	37-38	39-41	42-44	45-47	48-51	52-55

**COLOR INFORMATION**



Heathered Black  
PMS 426C



Heathered Grey



Heathered Navy  
PMS 2379C



Heathered Pink  
Azalea  
PMS 215C